

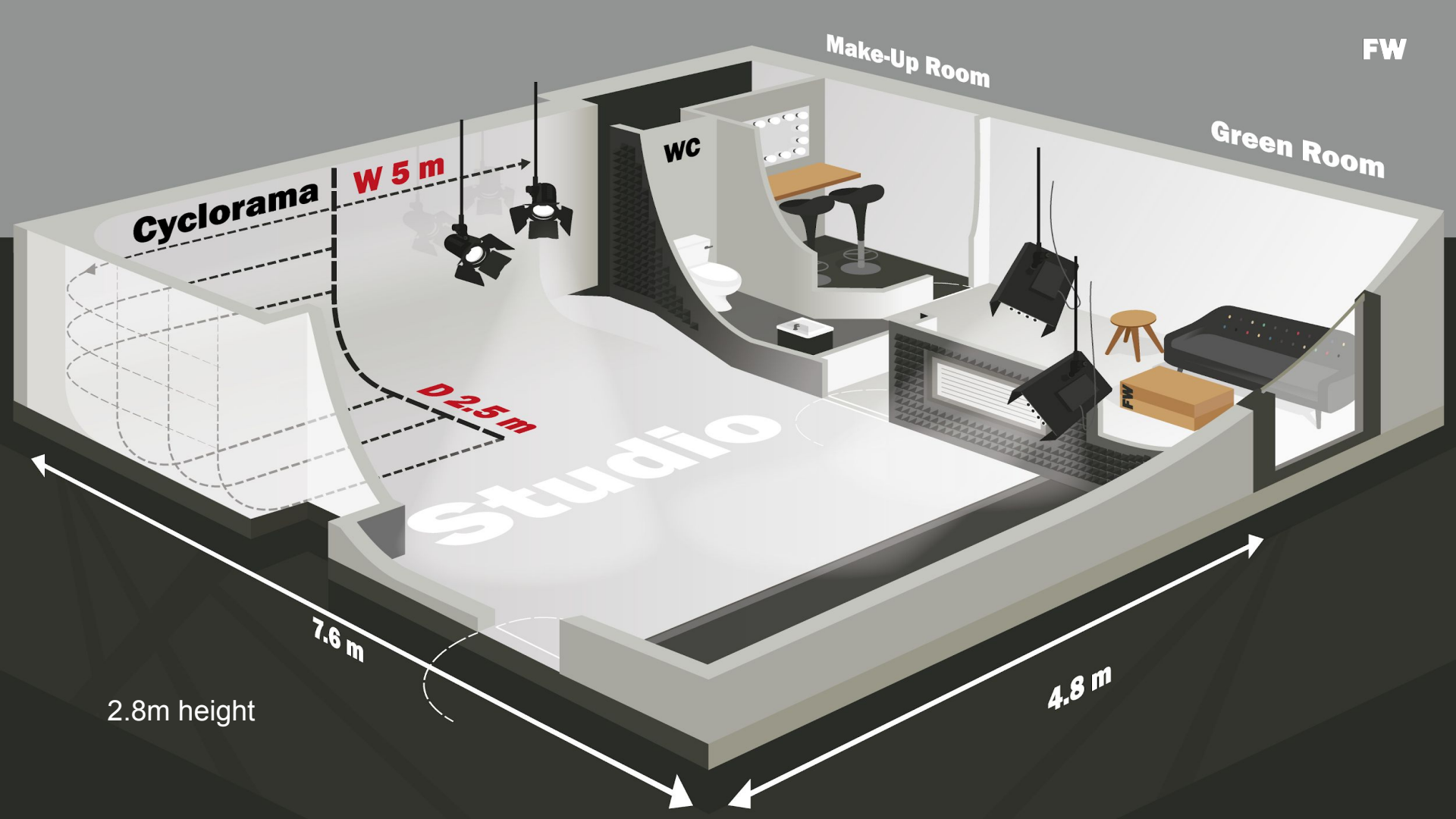
FWstudios

The Studio



FW Studios is a new, purpose-built film production space in Bow, East London.

Fully rigged, air-conditioned and sound treated with separate client/green room, makeup room and WC, our versatile 38 sq m studio is ready for any scenario including pieces to camera, interview setups, fashion shoots, training films, webcasts, stop motion animation, motion capture, product shots and photography.



Cyclorama

W 5 m

D 2.5 m

WC

Make-Up Room

Green Room

FW

Studio

FW

2.8m height

7.6 m

4.8 m



With the facilities carefully thought out by industry experts, we are able to accommodate your production crew and executive team in comfort.

Studio features

- White cyclorama around two walls
- Black curtain running around two walls
- Paper background roll drops, pre-loaded with chroma green and mid grey
- Air conditioning
- Double skinned sound treated walls
- Acoustic sound dampening
- Versatile ceiling mounted lighting rail system
- Cabled 150mb asynchronous internet to contributor and camera positions
- Audio / Video patch bay through the wall to the Control/Green Room

The Facilities



Green Room and Gallery Area

The green room can accommodate clients and contributors in air conditioned comfort. There is a sofa, chairs, tea and coffee facilities and a WC. In the main studio complex, there's also a shower room.

From the gallery area clients are able to monitor the production from behind a quad glazed glass window. The gallery and studio both have wired 150mb asynchronous internet and a patch panel to feed sound and vision into the gallery area.



Makeup Room

The makeup room is a dedicated room, which features beauty lighting, as well as being rigged with production lighting for accurate modelling light. There is also a handheld steamer and clothes rail available.

Lighting & Sound



FW Studios comes with lighting rails which can be pre-configured to your requirements. Our standard configuration is shown in the following pages and we also offer other light sources which are available upon request.

For power and electricity, there are 13a mains supply outlets fitted at various points around the studio, at both ground and ceiling levels.



Front Lights

Twin parallel rail systems, each with 2x cross rails. One pantograph on each side is populated with 1x 4 foot 4 Bank Kinoflo head. One pantograph on camera left is populated with 1x 2 foot 4 Bank Kinoflo head. All Kinoflo heads are loaded with daylight tubes and wall mounted ballast control.



Back lights

Fixed full width single rail populated with 3x Dedolight DLH2 heads with dichroic filters, controlled by a DT12-4 dimmer. One head is on a 2m drop pantograph, the other two are on Single Spigot Carriages suspended on Manfrotto 2 Section Single Arms. There is a fourth Dedo head available to be used on the studio floor.



Cyc Lights

Mounted on fixed bars, we have 3 x Kinoflo Image 4x4 fixtures with daylight tubes and DMX control.



Sound

There is the facility to hang a microphone from a movable rail in the centre of the studio, this is pre-rigged with a single XLR cable.

2x JBL Control One speakers are wall mounted behind the camera position, powered by a Sound Lab SP2 amplifier and fed from a Spirit Folio RacPac mixer. The Control/Green Room is equipped with a PTT (push to talk) mic feeding into the studio and a Genelec 8010A powered speaker fed from the studio via the wall patch bay.

Rates and Packages



We have a range of packages and equipment available for your booking. Our weekday rates for the studio hire alone are below:

4h/Half Day -----	£300.00
8h/Full Day -----	£400.00
10h -----	£500.00
12h -----	£600.00
O/T booked in adv. ---	£50.00
O/T on the day-----	£75.00

Pre-Rigged with: Key lights - 2x Kinoflo 4x4, Back lights - 3x Dedo lights, Cyc lights, 3x Kinoflo Image 4x4 heads

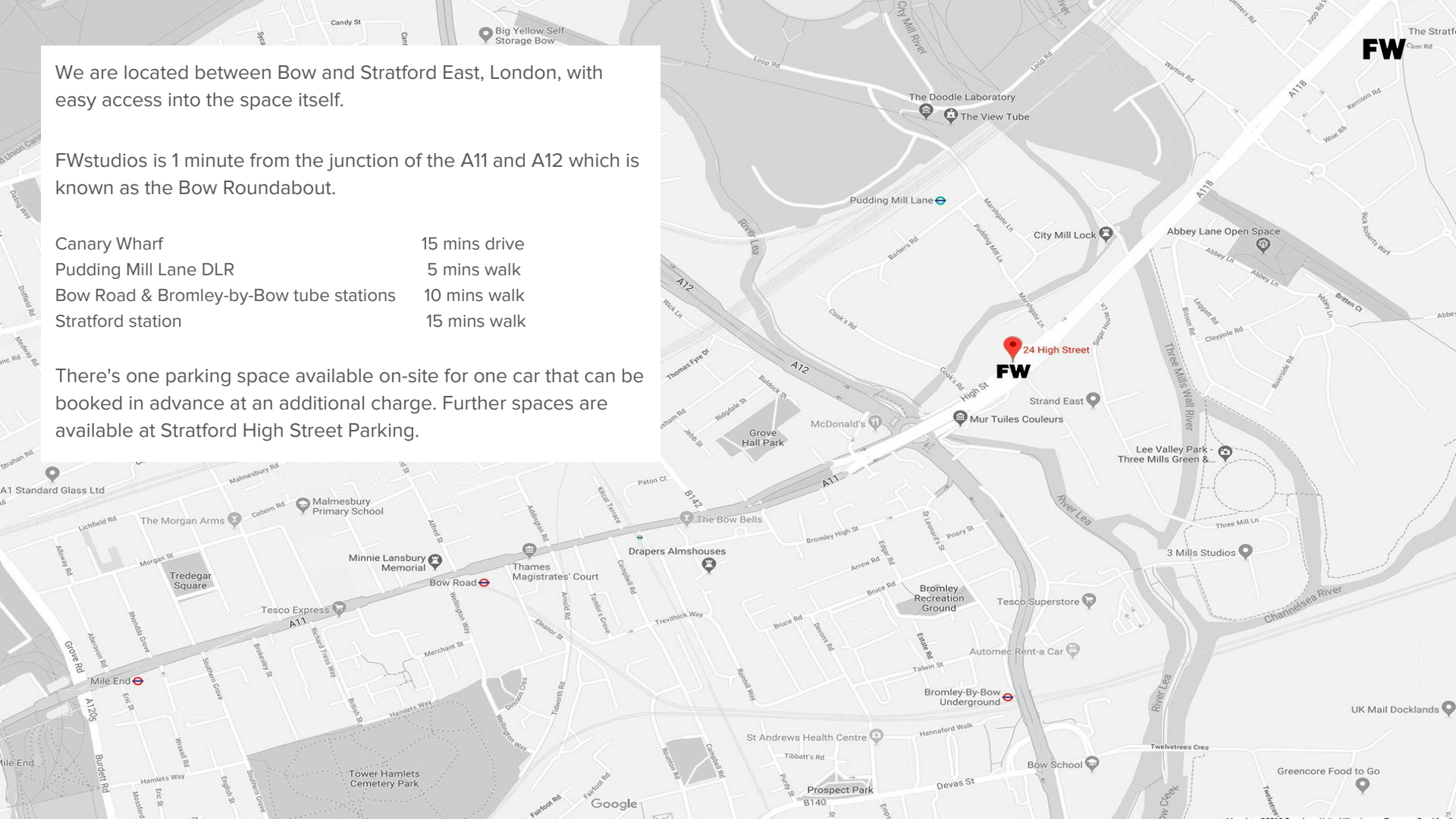
Location

We are located between Bow and Stratford East, London, with easy access into the space itself.

FWstudios is 1 minute from the junction of the A11 and A12 which is known as the Bow Roundabout.

Canary Wharf	15 mins drive
Pudding Mill Lane DLR	5 mins walk
Bow Road & Bromley-by-Bow tube stations	10 mins walk
Stratford station	15 mins walk

There's one parking space available on-site for one car that can be booked in advance at an additional charge. Further spaces are available at Stratford High Street Parking.



Some clients who've filmed with us



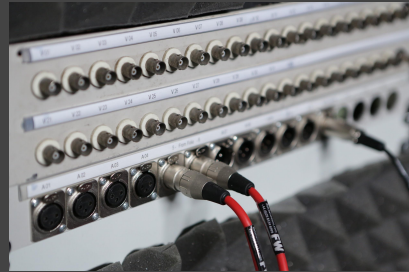
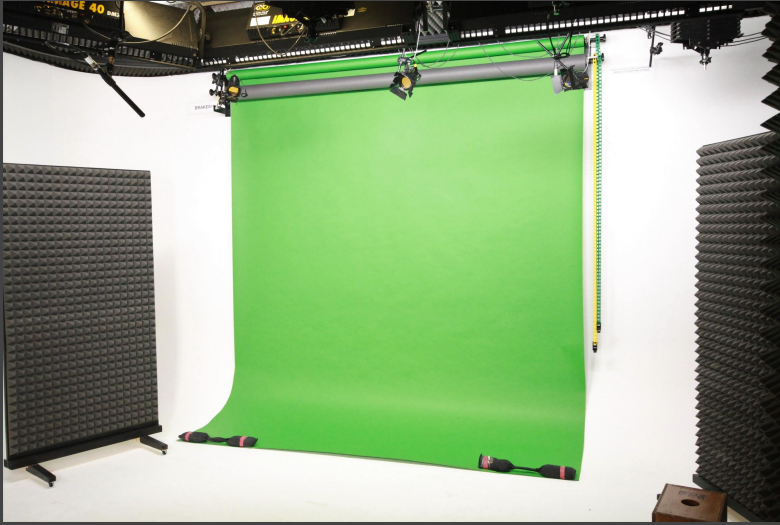
Beano have filmed with us multiple times for their online sketches, bringing a cast of presenters and actors, numerous props, sets and crew.

Nike used FW Studios for photographing fitness content for an internal campaign.

O'Reilly have filmed with us several times, capturing content for their explainer videos on programming, with the gallery set up to vision mix between the presenters and coding computers.

“*FWstudios is a comfortable, modern state of the art workspace. The studio is outfitted with new industry standard equipment to streamline our productions providing the perfect launch pad for our projects. Our client's and talent enjoy working at FW - the staff are creative, professional and accommodating.*”

— Kirk Walter | Director of Video Operations | O'Reilly Media, Inc.



Thank you