

# B&H STUDIOS

A unique studio space in Clerkenwell

BOURNE & HOLLINGSWORTH BUILDINGS  
NORTHAMPTON ROAD, LONDON, EC1R 0HU

[STUDIOS@BANDHGROUP.COM](mailto:STUDIOS@BANDHGROUP.COM)

+44(0) 20 77241617



## A NEW STUDIO FROM BOURNE & HOLLINGSWORTH

A bespoke space in Clerkenwell London for photoshoots, production, filming and events.

# STUDIO INFORMATION

Brought to you by Bourne & Hollingsworth, B&H Studios is a brand new creative space, ideal for a range of productions, shoots, filming and events.

Converting an entire floor of B&H Buildings, the space has undergone a stunning renovation, with the painstaking attention to detail that the group are renowned for.

Our studio has 165 square meters of shooting space with a mix of white brick, white plastered and wood panelled walls, large sash windows and a mix of both parquet and concrete flooring.

With three breakout rooms ideal for hair and make up, styling and lunch, B&H Studios is a perfect canvas and set up for photoshoots and filming.





- Over 200 square meters of usable space
- White Studio space: 131 sqm
- Kitchen Studio Space: 36 sqm (open or separate to main studio)
- Make up room/green room: 12 sqm
- Styling room/production: 17 sqm
- Private balcony space: 10 sqm
- White brick walls, white plasters walls and white panelled walls
- Parquet wooden and concrete flooring
- Mobile makeup desk
- Private styling room/green room (2 rails, 50 hangers)
- Three phase and single phase power: 180amps, 63/32amp outlets
- Wireless leased line broadband



FLOORPLAN.



## LOCATION.

The ideal central London location for filming or photoshoots. B&H Studios is in the heart of Clerkenwell with easy access to public transport and amenities.

The surrounding area offers a versatile backdrop of multiple location types with both green space and built environment backgrounds.

The location is positioned on a quiet street that can additionally be hired and completely closed for larger location film productions. The spaces outside B&H Studios are regularly booked for film facility vehicles and talent trailers.

TV SHOWS & FILMS.





# BBC HORIZON

The BBC hired the entire building for a one off special of Horizon.

MasterChef judge Gregg Wallace and mathematician Dr Hannah Fry took over our restaurant, studio space and cookery school and invited five special guests to enjoy a dinner party with a difference, where they were scored on the carbon footprint of every dish they choose

Diners Sara Pascoe, Amol Rajan, Nikki Fox, Desiree Burch and Matthew Fort choose from a menu of tantalising treats in the main restaurant each of which tells its own positive and negative environmental story.

Our kitchen team prepared delicious dishes with Gregg Wallace in B&H Kitchen, our cookery school, and chatted about tips and tricks we can all use to cook more sustainably. The bar area was used by environmental scientists to reveal the carbon footprint of every single item on the menu and talked about the latest research that can help us enjoy the food we love that doesn't cost the Earth.





# STARSTRUCK AVALON TV

Starstruck: Six Part TV Series HBO & BBC

Avalon productions hired the whole of B&H Buildings, including the studio and the street outside to shoot scenes for Starstruck a brand new six-part comedy written, created by and starring 2018 Edinburgh Comedy Award winner Rose Matafeo commissioned by BBC Three and HBO Max in the USA.

The 6 x 30 series follows twenty-something Rose (Rose Matafeo), a millennial in London juggling two dead-end jobs and navigating the awkward morning-after-the-night-before when she discovers the complications of accidentally sleeping with a film star.



PRODUCT LAUNCHES & EVENTS.





From weddings and parties, to workshops and corporate days out, B&H Studios is a wonderful backdrop for your special event.

The versatility of the space, with the clean, original, light aesthetic, makes it a wonderful and easy-to-personalise setting for your event.

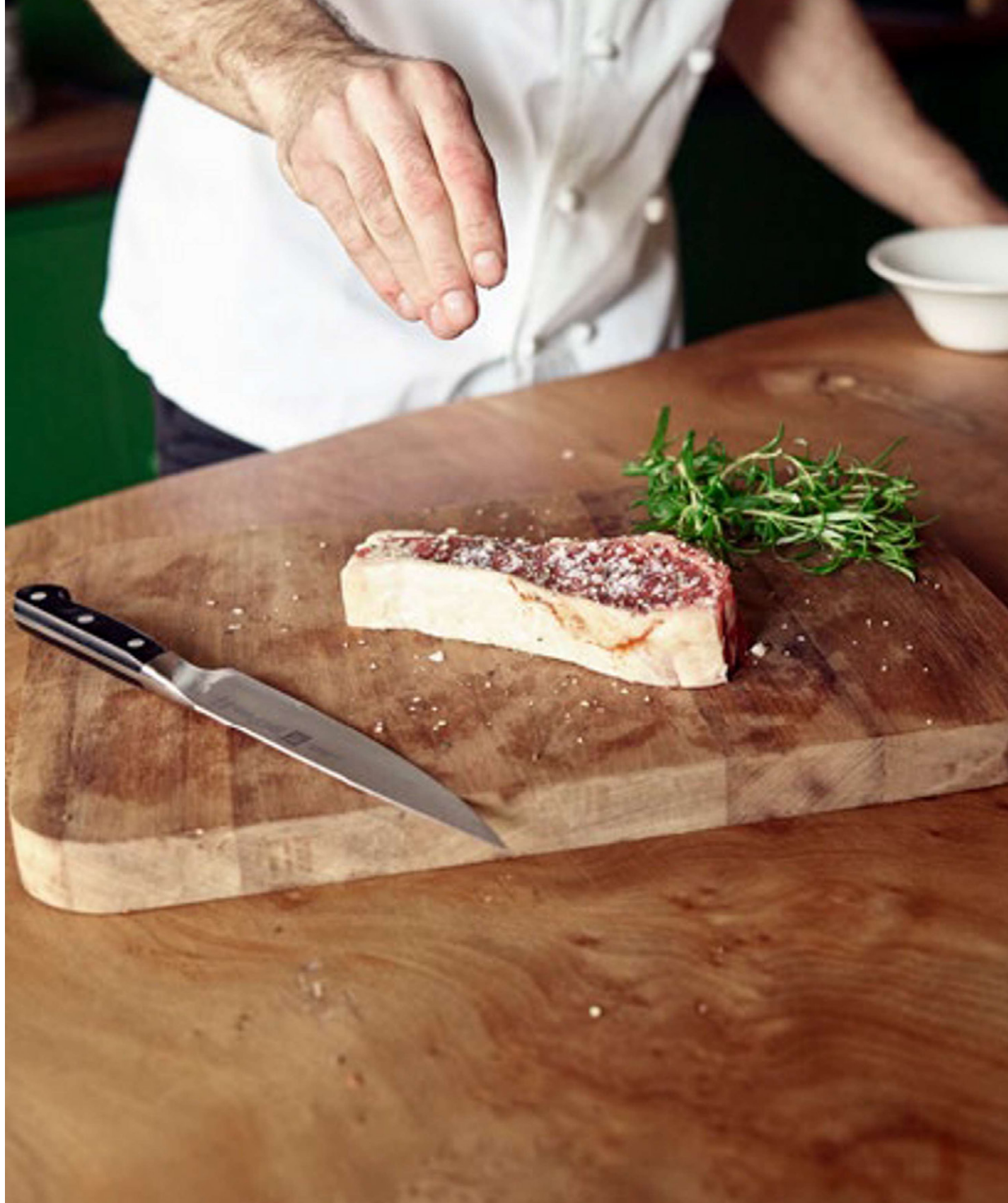
- Bar and reception space
- Up to 180 seated
- Up to 250 standing reception
- Special breakout rooms for hair, make up and styling
- Private entrance and terrace



“Thank you so much for everything, it was a wonderful evening and everyone had a fantastic time”

- AMELIA TREVETTE, STYLIST MAGAZINE

FOOD & DRINK CAMPAIGNS.



Our venue has been a popular choice for food and drink campaigns over the years.

From rustic farmhouse style food and cookery campaigns in B&H Kitchen to cocktail tutorials and adverts behind the bar to complete set builds in B&H Studios, campaigns include Diageo, Pernod Ricard, Appleton Estate, V-Zug, British Standard, BBC Goodfood, Sainsbury's Magazine, Fevertree and M&S.





COCKTAIL  
CAMPAIGNS





## CATERING OPTIONS

Production is heavy work and requires a lot of hearty sustenance to keep a team motivated and happy.

With B&H Buildings, a fully functioning restaurant and bar situated just below serving delicious meals, the team can arrange next-level food for all shoot bookings.

From hearty and healthy breakfasts to tasty lunch spreads and after-shoot cocktails, we're on hand to keep you and your team well fed throughout the day.

End of the day cocktails - An excellent way to round off a long day of shooting, we can arrange for a bespoke drinks trolley on set, or a space in our renowned cocktail bar, situated just downstairs

# B & H BUILDINGS

Bourne & Hollingsworth Buildings is many things to many people: weekend brunch hangout, special dinner venue, Wednesday meeting room, afternoon tea spot, remote office, Friday cocktails haunt, first date find – to name a few. The versatility of the space, coupled with the clean, original and incredibly light aesthetic, also make it a favourite for photoshoots and filming.

Since opening in 2014, B&H Buildings has played host to all manner of product launches, showcases, photoshoots, recipe testing, cookery demonstrations and filming.

- Seven distinct spaces in one large building
- Great natural light and a unique aesthetic
- Central London location, quiet street
- Off street parking, easy unloading
- Range of individual rooms
- Perfect for breakout sessions and interviews
- Team of creatives on hand to brainstorm solutions
- Flexible hire rates and timings
- Office space that is perfect for a gallery or production office



# STUDIO FAQS

## FEATURES

- White plastered walls
- White brickwork
- Sash windows
- High vaulted ceilings
- Daylight
- North facing windows
- Private styling room/green room
- Stylist kit (2 rails, 50 hangers)
- Iron + ironing board
- Mobile makeup desk
- Fridge, kettle, toaster, crockery + cutlery
- Power: 180amps, 63/32amp outlets
- Wireless leased line broadband
- Closest station: Farringdon or Angel
- Parking
- Loading bay
- Closest hospital: Moorfields Eye Hospital  
162 City Road  
EC1V 2PD  
+44 (0) 20 7253 3411
- Closest Police Station: Holborn Police Station  
10 Lambs Conduit Street  
WC1N 3NR

OUR CLIENTS.

ALEXACHUNG

ERDEM

ASOS

M&S

EST. 1884



KURT GEIGER  
LONDON



*STYLIST*  
MAGAZINE



VOGUE

BOURNE & HOLLINGSWORTH BUILDINGS  
NORTHAMPTON ROAD, LONDON, EC1R 0HU  
[STUDIOS@BANDHGROUP.COM](mailto:STUDIOS@BANDHGROUP.COM)  
+44(0) 20 77241617